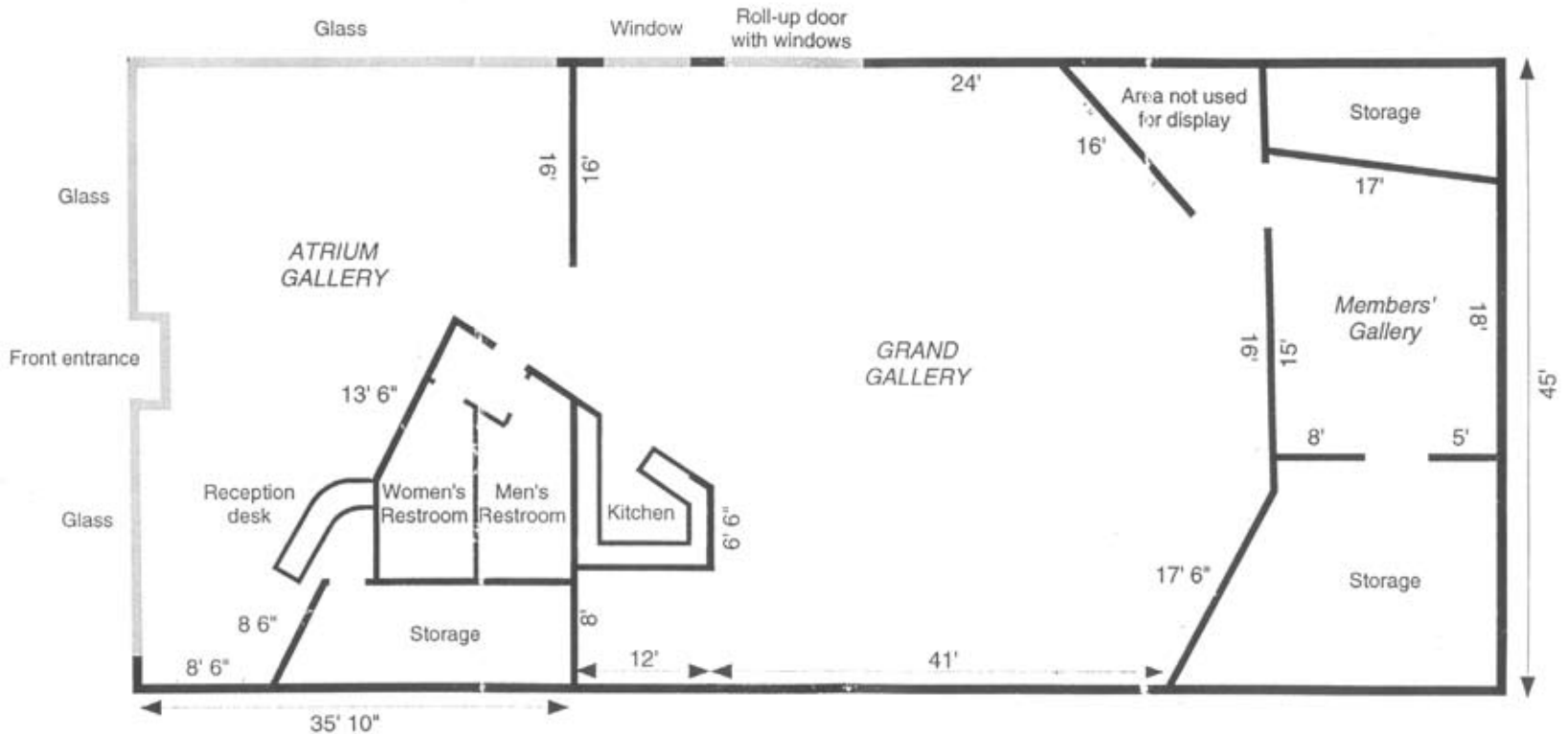


ORANGE COUNTY CENTER FOR CONTEMPORARY ART FLOOR PLAN

Linear distances are indicated in approximated feet



- Interior is a simple "warehouse" design, with open wooden roof trusses, which support overhead lighting; air conditioning/heating ducts and electrical conduits are plainly visible; floor is unpainted concrete.
- Ceiling is an open-truss design; bottom of trusses are approximately 14' above floor.
- White gallery walls are approximately 10' 6" in height.
- Several additional free-standing movable V-walls (approximately 8' h x 7' w) and straight walls (approximately 8' h x 18' d, in 4' and 6' lengths) are available, as well as a few pedestals and "flats" of varying dimensions.